



Control Programming LLC

Release Notes

AV Switcher Driver – Wolfpack 4K2K HDMI 16x16 - UDP version 1.00.001

Driver

This release note is for the AV Switcher Crestron Dynamic Driver Wolfpack 4K2K HDMI 16x16.

Notes and Recommendations

Any notes or recommendations to be made.

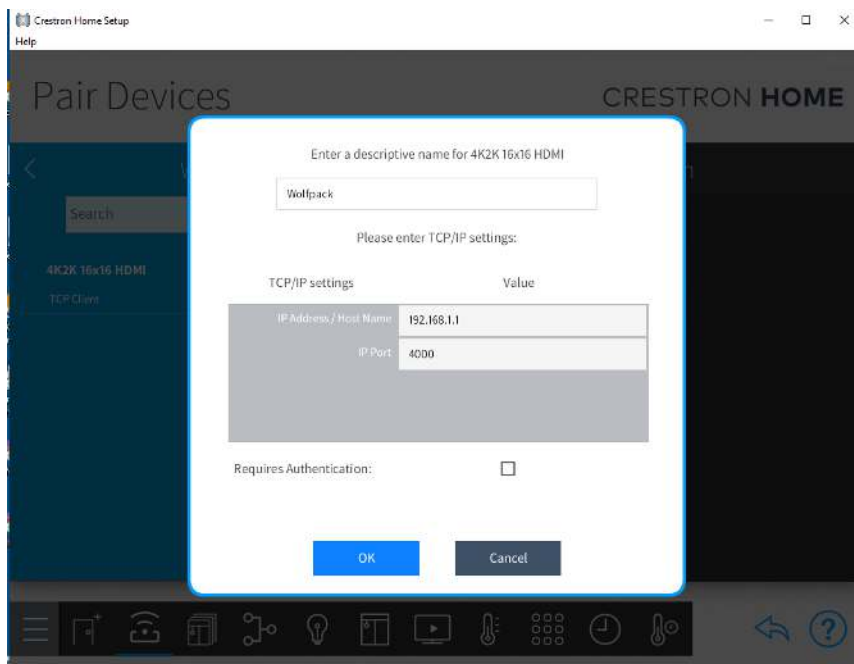
System Requirements and Dependencies

Provide any minimum versions of applications required to run your driver.

- I.E. Crestron Home v3.002

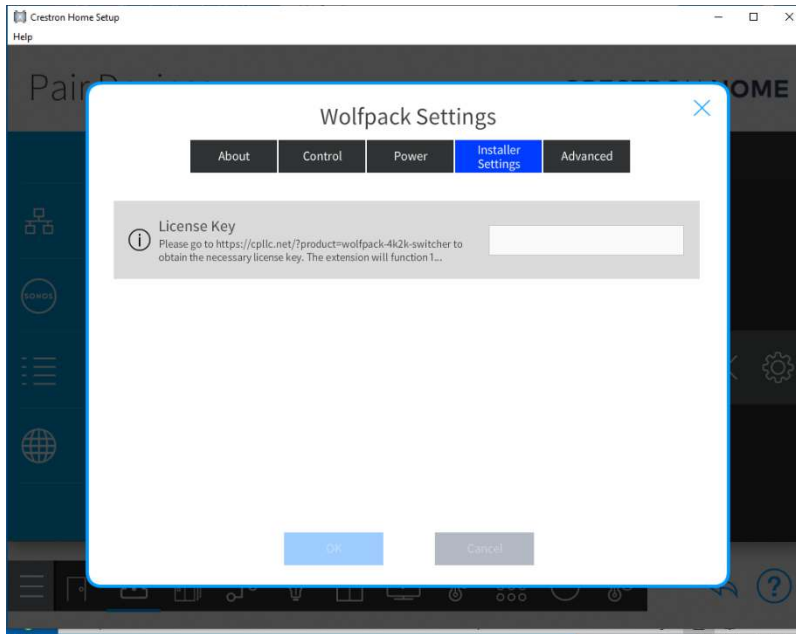
Installation/Upgrade Instructions

Installation and dealer-facing configuration instructions.



IP Address/Host Name – IP address if device to send the control strings to

Port – UDP Port number device is listening on



License Key – this extension requires a paid license key which can be obtained from <https://cpllc.net/?product=wolfpack-4k2k-switcher>. For testing purposes, this extension will function 100% for 2 hours. Rebooting will reset the two hours.

End-User Experience

This is a driver and as such there is no end user experience.

Limitations/Known Issues

No known limitations. This driver is designed to provide Crestron HOME control of legacy Crestron products such as the Procise and/or the AMS-AIP.

Supported Features

This list comes from the driver JSON file in human readable form.

It does not expect any feedback from the receiving device.

Test Environment

List the environments where this driver has been tested and any control system firmware versions used.

- I.E. Crestron Home v3.005.1234

Supported Models

Wolfpack 4K2K 16x16 HDMI switcher

Contact Information

- Company: Control Programming LLC
- Author: Randy Johnson
- Email: randy@CP LLC.net
- Website: <https://CP LLC.net>
- License: <https://cp llc.net/?product=wolfpack-4k2k-switcher>

Version History

2021-05-08 1.00.001.0001

- Initial release

Licensing and Copyright Information

Certain Crestron products contain open-source software. For specific information, please visit www.crestron.com/opensource