



# Control Programming LLC

## Release Notes

UI Tiles – Control Programming LLC - Shade - Cloud  
version 2.00.006

### Extension

---

This release note is for the CPLLC UI Tile Shade Extension. This extension is for UI purposes only and must be “wired” to the actual hardware control.

### Notes and Recommendations

---

Drivers->UI Tiles->Control Programming LLC->Shade

### System Requirements and Dependencies

---

Crestron Home v3.005.0054

### Operation Installation/Upgrade Instructions

---

#### Installer Options

#### Installation Settings

	<b>License Key</b>
Please go to <a href="https://cpllc.net/?product=ui-tile-shade">https://cpllc.net/?product=ui-tile-shade</a> to obtain the necessary license key. The extension will function 100% without a license key for 2 hours.	
	<input type="text"/>
	<b>Seconds between Fully Opened/Closed</b>
Number of seconds it takes the Shade to transition between fully opened and fully closed.	
	<input type="text" value="10"/>

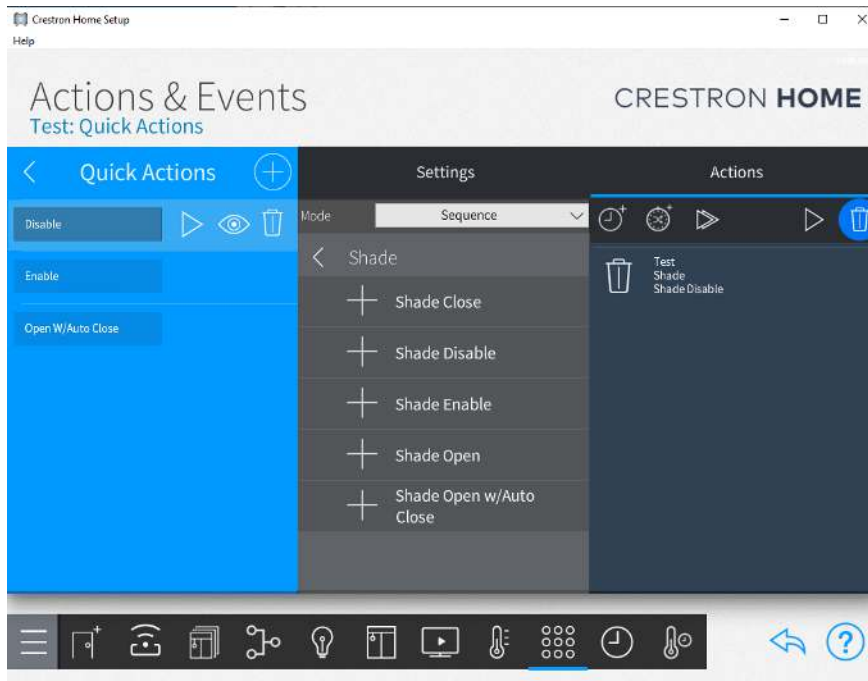
**License Key** – this extension requires a paid license key which can be obtained from <https://cpllc.net/?product=ui-tile-shade>. For testing purposes, this extension will function 100% for 2 hours. Rebooting will reset the two hours.

**Seconds between Fully Open/Closed** – Seconds the shade takes to be fully closed/opened

OK

Cancel

## Actions



**Shade Close** – Start the shade closure

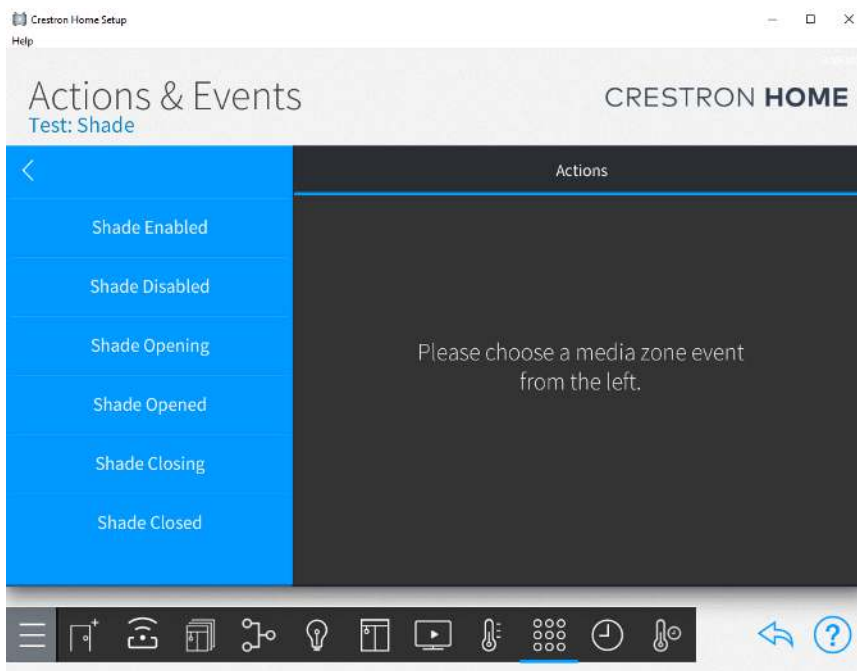
**Shade Open** – Start the shade opening

**Shade Disable** – Disable the extension

**Shade Enabled** – Enable the extension

**Shade Open w/Auto Close** – Allows the installer to setup an automatic closure feature after a define number of seconds

## Events



**Shade Enabled** - enable normal extension functions

**Shade Disabled** – disable normal extension functions

**Shade Opening** – shade is starting to open

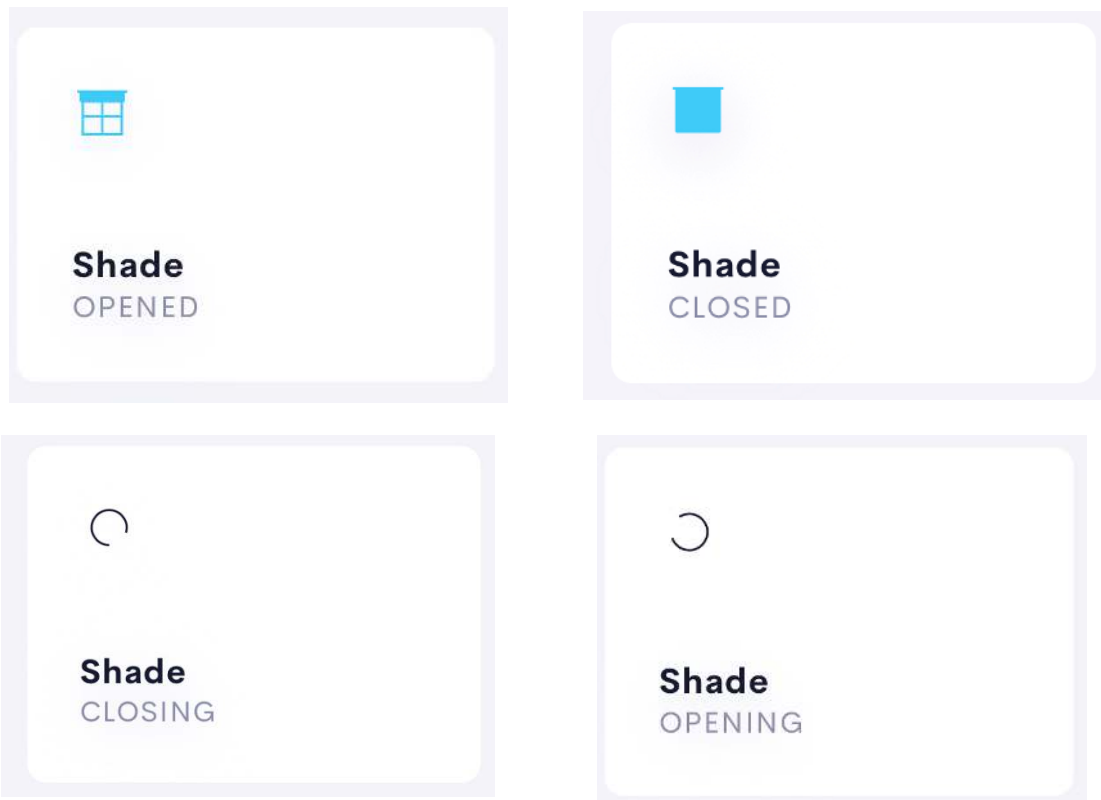
**Shade Opened** – shade is opened

**Shade Closing** – shade is starting to close

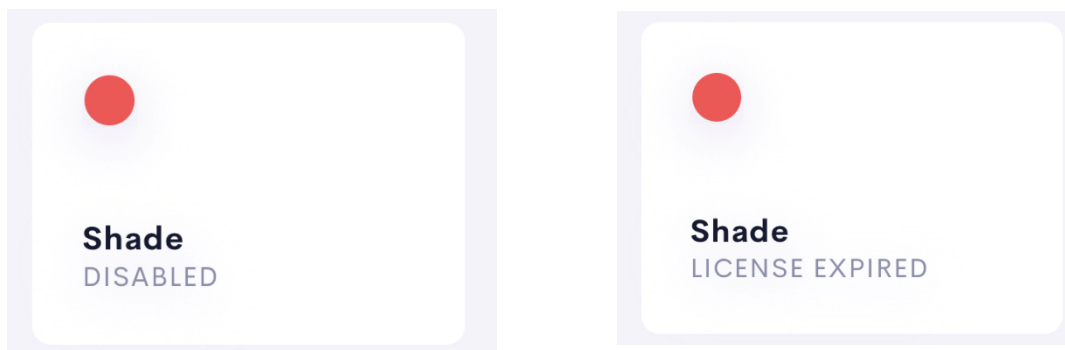
**Shade Closed** – shade is closed

## End-User Experience

---



The above 4 images show the feedback as the shades goes from being opened, closed, opening, and closing. Opening and closing states will show a spinning circle for the number of seconds defined in the installer options.



The left image shows feedback is the extension has been disabled. The right image shows the feedback when the license has expired.

## Limitations/Known Issues

---

- No known limitations or issues

## Supported Features

---

- Not applicable

## Test Environment

---

- CP4-R and MC4-R
- Crestron Home v3.005.0054

## Contact Information

---

- Company: Control Programming LLC
- Author: Randy Johnson
- Email: [randy@CPLLC.net](mailto:randy@CPLLC.net)
- Website: <https://cpllc.net>
- License Key: <https://cpllc.net/?product=ui-tile-shade>

## Version History

---

- |            |  |
|------------|--|
| 2023-04-04 | 2.00.006   |
|            | <ul style="list-style-type: none"><li>• Added required CCD SDK JSON fields</li></ul> |
| 2022-11-02 | 2.00.003   |
|            | <ul style="list-style-type: none"><li>• Upgraded to license manager</li></ul>        |
| 2021-04-10 | 1.01.001.0001  |
|            | <ul style="list-style-type: none"><li>• Initial Release</li></ul>                    |

## Licensing and Copyright Information

---

2021-2023 © Control Programming LLC, all rights reserved