



Control Programming LLC

Release Notes

Driver – Control Programming LLC – Serial Strings Display – RS232
version 1.01.001

Driver

This driver implements a limited set of commands for controlling an RS232 display. The installer can manually enter in the required serial strings to accomplish:

- Power On
- Power Off
- Input 1
- Input 2
- Input 3
- Input 4
- Volume Plus
- Volume Minus
- Mute Toggle
- Mute On
- Mute Off

Notes and Recommendations

Any notes or recommendations to be made.

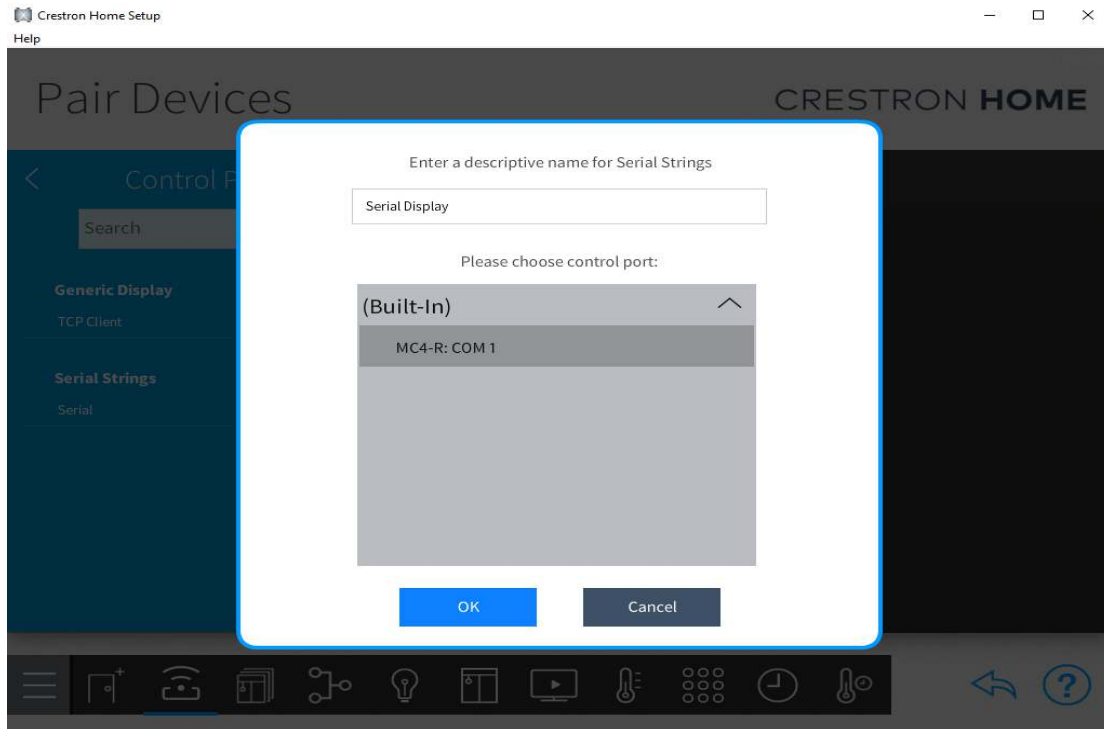
System Requirements and Dependencies

Provide any minimum versions of applications required to run your driver.

- I.E. Crestron Home v3.002

Installation/Upgrade Instructions

Installation and dealer-facing configuration instructions.



Installation Settings

①	License Key	<input type="text"/>
Please go to https://cpllc.net/?product=serial-strings-display to obtain the necessary license key. The extension will function 100% without a license key for 2 hours.		
①	Power On	<input type="text" value="POWER ON"/>
Power On Command serial string		
①	Power Off	<input type="text" value="POWER OFF"/>
Power Off Command serial string		
①	Input 1	<input type="text" value="Input 1"/>
Input 1 Command serial string		
①	Input 2	<input type="text" value="Input 2"/>
Input 2 Command serial string		
①	Input 3	<input type="text" value="Input 3"/>
Input 3 Command serial string		
①	Input 4	<input type="text" value="Input 4"/>
Input 4 Command serial string		
①	Volume Minus	<input type="text" value="Vol Minus"/>
Volume Minus Command serial string		
①	Volume Plus	<input type="text" value="Vol Plus"/>
Volume Plus Command serial string		
①	Mute Toggle	<input type="text" value="Mute Toggle"/>
Mute Toggle Command serial string		
①	Mute On	<input type="text" value="Mute On"/>
Mute On Command serial string		
①	Mute Off	<input type="text" value="Mute Off"/>
Mute Off Command serial string		

OK

Cancel

License Key – this extension requires a paid license key which can be obtained from <https://cpllc.net/?product=serial-strings-display>. For testing purposes, this extension will function 100% for 2 hours. Rebooting will reset the two hours.

Power On – Serial string to turn serial display on

Power Off – Serial string to turn serial display off

Input 1 – Serial string to select display's input 1

Input 2 – Serial string to select display's input 2

Input 3 – Serial string to select display's input 3

Input 4 – Serial string to select display's input 4

Volume Minus – Serial string to lower display's volume

Volume Plus – Serial string to raise display's volume

Mute Toggle – Serial string to toggle display's volume on/off

Mute On – Serial string to mute display's volume

Mute Off – Serial string to unmute display's volume

If there is a need to insert hexadecimal/binary values, it will need to be formatted as follows: `\u0000` for each binary character

For example: carriage return `\u000D`

End-User Experience

This is a driver and as such there is no end user experience.

Limitations/Known Issues

No known limitations. This driver is designed to provide Crestron HOME control of legacy Crestron products such as the Procise and/or the AMS-AIP.

Supported Features

This list comes from the driver JSON file in human readable form.

- Discrete Power On/Off
- Discrete Mute On/Off
- Volume Raise/Lower
- Inputs 1-8

It does not expect any feedback from the receiving device.

Test Environment

List the environments where this driver has been tested and any control system firmware versions used.

- I.E. Crestron Home v3.001.1234

Supported Models

Generic driver

Contact Information

- Company: Control Programming LLC
- Author: Randy Johnson
- Email: randy@CP LLC.net
- Website: <https://CP LLC.net>
- License: <https://cp llc.net/?product=serial-strings-display>

Version History

2021-05-10 1.0.1

- Initial release

Licensing and Copyright Information

Certain Crestron products contain open-source software. For specific information, please visit www.crestron.com/opensource