



Control Programming LLC

Release Notes

UI Tiles – Control Programming LLC - Shade - Cloud
version 4.000

Extension

This release note is for the CPLLC UI Tile Shade Extension. This extension is for UI purposes only and must be “wired” to the actual hardware control.

Notes and Recommendations

Drivers->UI Tiles->Control Programming LLC->Shade

System Requirements and Dependencies

- Crestron Home v4.000
- This extension requires that the License Manager (<https://cpllc.net/product/license-manager/>) also be installed on the processor.

Operation Installation/Upgrade Instructions

Installation Settings

The screenshot shows a dialog box with two sections. The first section is titled 'License Key' and contains an information icon, a text prompt: 'Please go to <https://cpllc.net/?product=ui-tile-shade> to obtain the necessary license key. The extension will function 100% without a license key for 2 hours.', and an empty text input field. The second section is titled 'Seconds between Fully Opened/Closed' and contains an information icon, a text prompt: 'Number of seconds it takes the Shade to transition between fully opened and fully closed.', and a text input field containing the number '10'.

Installer Options

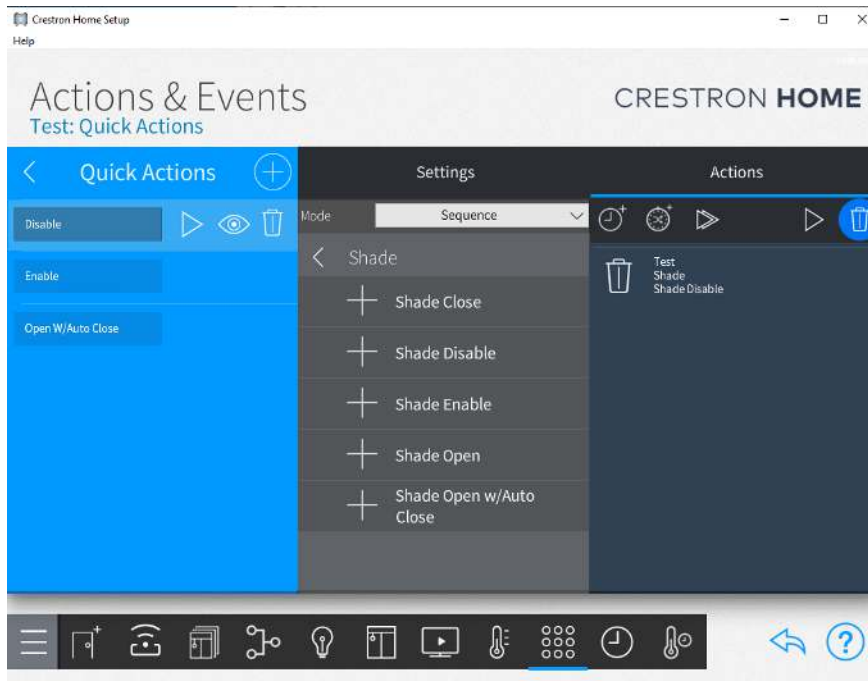
License Key – this extension requires a paid license key which can be obtained from <https://cpllc.net/?product=ui-tile-shade>. For testing purposes, this extension will function 100% for 2 hours. Rebooting will reset the two hours.

Seconds between Fully Open/Closed – Seconds the shade takes to be fully closed/opened

OK

Cancel

Actions



Shade Close – Start the shade closure

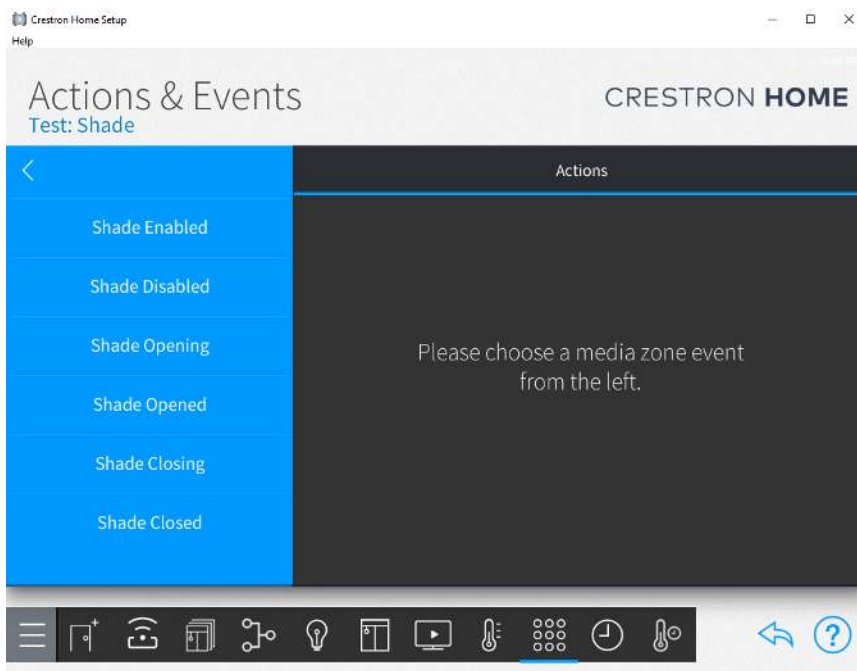
Shade Open – Start the shade opening

Shade Disable – Disable the extension

Shade Enabled – Enable the extension

Shade Open w/Auto Close – Allows the installer to setup an automatic closure feature after a define number of seconds

Events



Shade Enabled - enable normal extension functions

Shade Disabled – disable normal extension functions

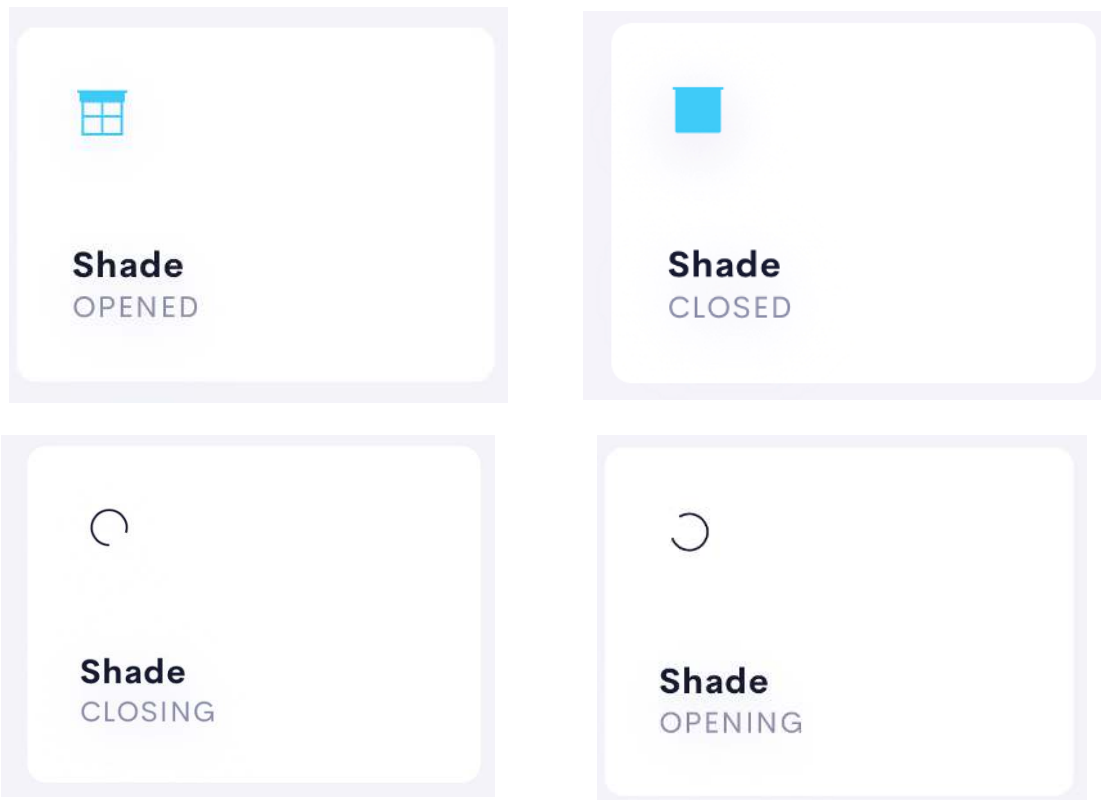
Shade Opening – shade is starting to open

Shade Opened – shade is opened

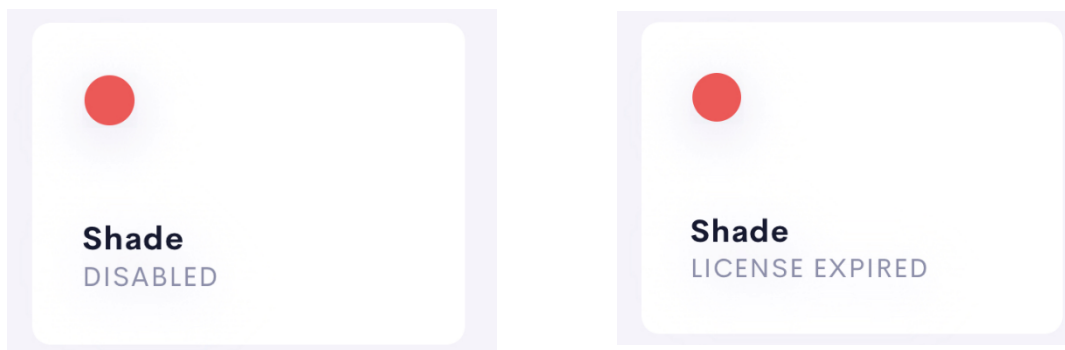
Shade Closing – shade is starting to close

Shade Closed – shade is closed

End-User Experience



The above 4 images show the feedback as the shades goes from being opened, closed, opening, and closing. Opening and closing states will show a spinning circle for the number of seconds defined in the installer options.



The left image shows feedback is the extension has been disabled. The right image shows the feedback when the license has expired.

Limitations/Known Issues

- No known limitations or issues

Supported Features

- Not applicable

Test Environment

- CP4-R and MC4-R
- Crestron Home v4.000

Contact Information

- Company: Control Programming LLC
- Author: Randy Johnson
- Email: randy@CPLLC.net
- Website: <https://cpllc.net>
- License Key: <https://cpllc.net/?product=ui-tile-shade>

Version History

2024-02-17 4.000

- Converted to new CH SDK

2023-04-04 2.00.006

- Added required CCD SDK JSON fields

2022-11-02 2.00.003

- Upgraded to license manager

2021-04-10 1.01.001.0001

- Initial Release

Licensing and Copyright Information

2021-2023 and all subsequent years © Control Programming LLC, all rights reserved