



Control Programming LLC

Release Notes

Mantel Mount - UDP
version 4.0

Extension

This release note is for the CPLLC Mantel Mount Extension.

Notes and Recommendations

Drivers->Lift->Mantel Mount->MM80

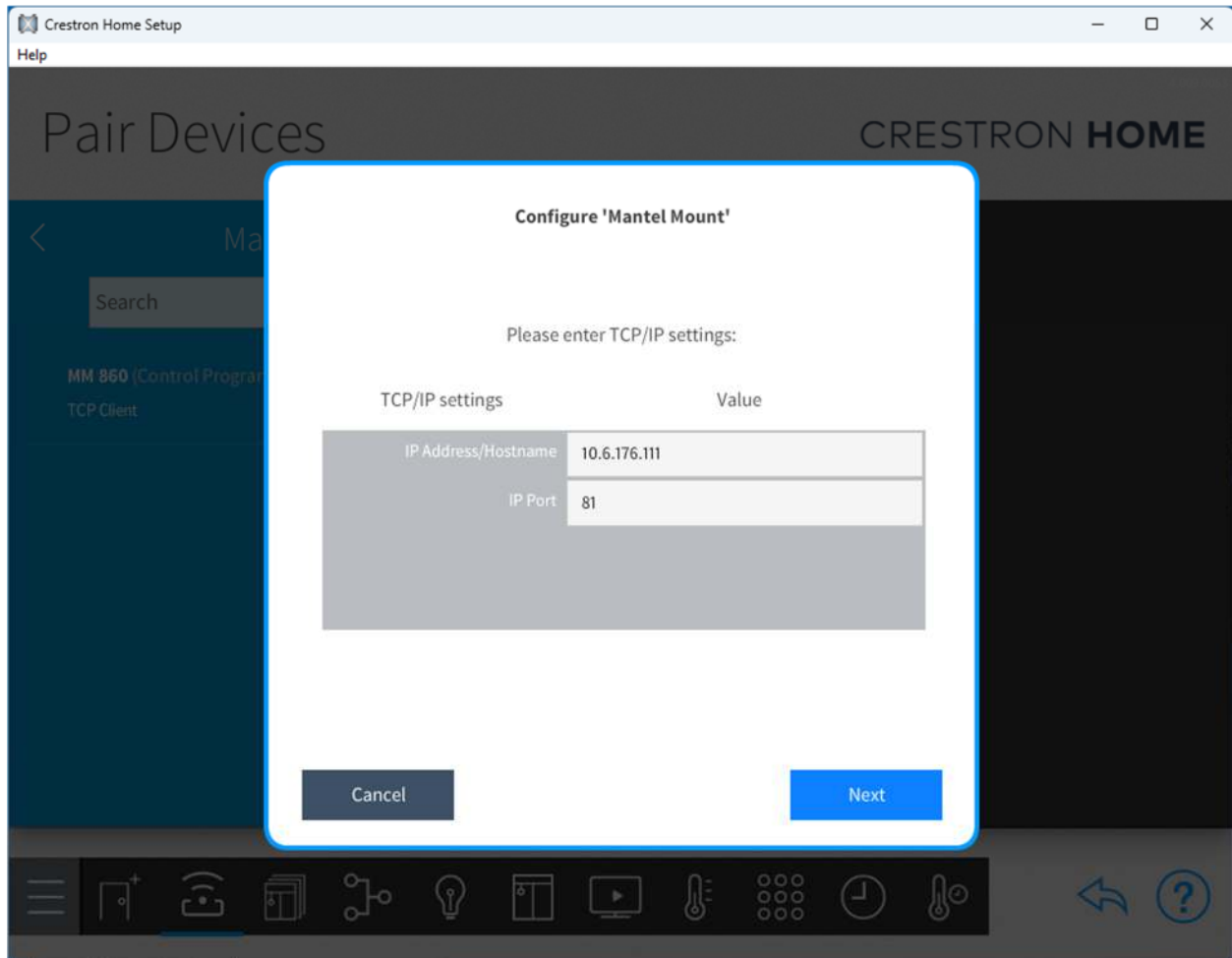
System Requirements and Dependencies


Crestron Home v4.7

This extension requires that the License Manager (<https://cpllc.net/product/license-manager/>) must also be installed on the processor.

Operation Installation/Upgrade Instructions

Installer Options Control – this extensions uses UDP packets to control the Mantel Mount






Obtain License Key


Clicking the link, on the right, takes you to CPLLC.net where license keys can be obtained. A purchased license key is required to be entered into each extension's license key field in order to author...

CPLLC.net



Enter License Key


A purchased license key must be obtained by clicking the above link and entered here. The extension will function 100% without a license key for 2 hours.



Show on Home Screen

Checked to show on Home screen. If checked, the Tile Clickable and Only Tile Display settings will be ignored. Crestron Home does not allow clickable actions when the tile is displayed on the Home Screen.

☐



Show in Room Screen

Checked to show in Room screen

☒

Obtain License Key – clicking on “CPLLC.net” will bring up the webpage to purchase a license.

Enter License Key – the license key obtained will be entered her.

Show on Home Screen – if checked the extension will show up on the home screen.

Show in Room Screen – if checked, the extension will show up in the Room.

Events

There are numerous events

- Extension Disabled
- Extension Enabled
- Home Pressed
- Jog Down Pressed
- Jog Left Pressed
- Jog Right Pressed
- Jog Up Pressed
- Preset Recall 1 Pressed
- Preset Recall 2 Pressed
- Preset Recall 3 Pressed
- Preset Save 1 Pressed
- Preset Save 2 Pressed
- Preset Save 3 Pressed
- Stop Pressed

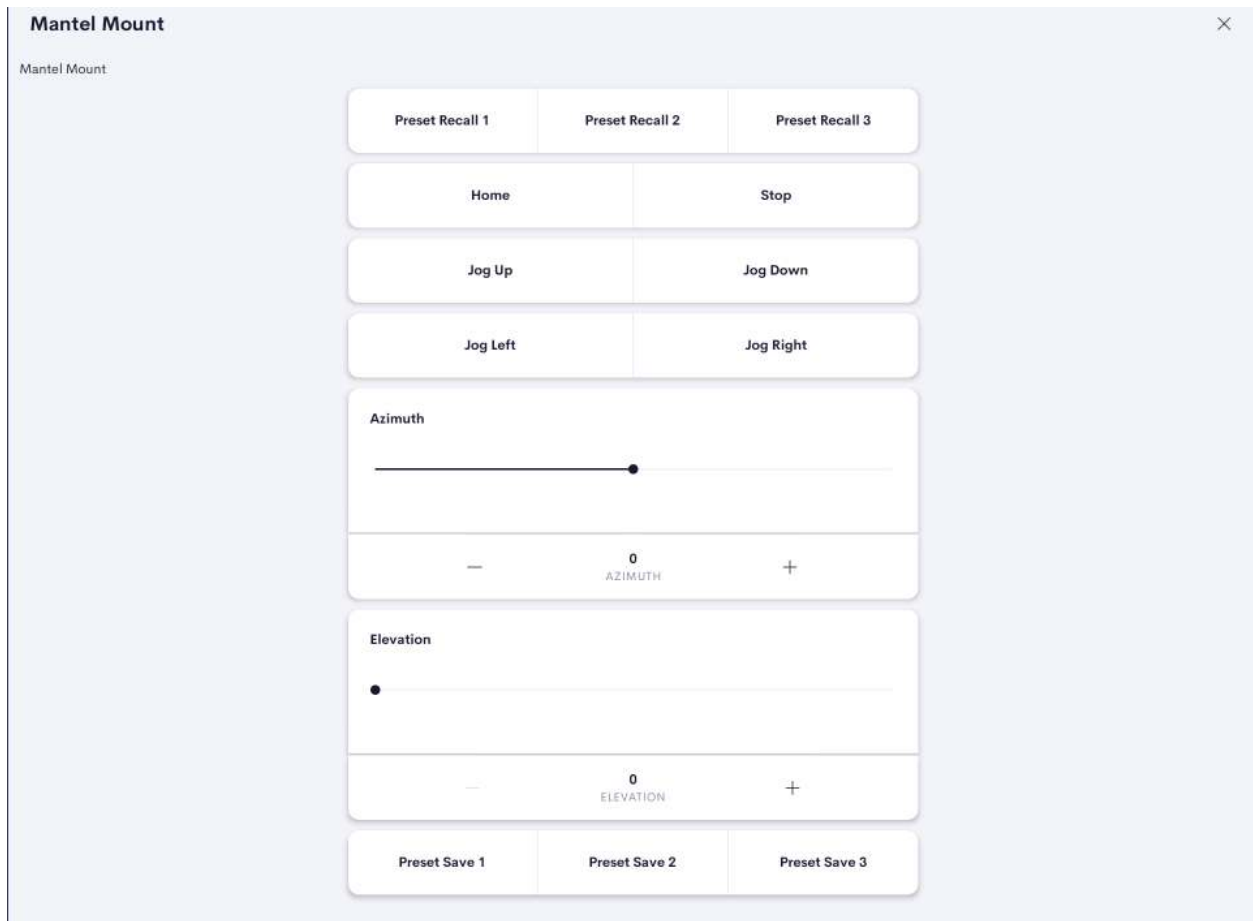
Actions

There are numerous events

- **Azimuth – enter a value between -23 and 23 degrees**
- **Elevation – enter a value between 0 and 115 degrees**
- **Extension Disable**
- **Extension Enable**
- **Home Press**
- **Jog Down Press**
- **Jog Left Press**
- **Jog Right Press**
- **Jog Up Press**
- **Preset Recall 1 Press**
- **Preset Recall 2 Press**
- **Preset Recall 3 Press**
- **Preset Save 1 Press**
- **Preset Save 2 Press**
- **Preset Save 3 Press**
- **Stop Press**

End-User Experience

Shown below is the UI for manipulating the Mantel Mount.



Limitations/Known Issues

- No known limitations or issues

Supported Features

- Not applicable

Test Environment

- CP4-R and MC4-R
- Crestron Home v4.007.0232

Contact Information

- Company: Control Programming LLC
- Author: Randy Johnson
- Email: randy@CPLLC.net
- Website: <https://cpllc.net>
- License Key: <https://cpllc.net/product/mantel-mount/>

Version History

2025-12-07 4.003

- Initial release

Licensing and Copyright Information

© 2025 to the present Control Programming LLC, and all rights are reserved