



# Control Programming LLC

## Release Notes

Platform – Kasa - Platform - Cloud  
version 4.0

### Extension

---

This release note is for the CPLLC Kasa Platform Extension. Kasa is a cloud control of various IoT devices via their Wi-Fi connections and is described <https://www.kasasmart.com/us>.

### Notes and Recommendations

---

All Kasa devices will need to be acquired and setup using the Kasa mobile app. The extension will obtain a list of devices associated with a given Kasa login.

This extension uses the Kasa cloud protocol and will need internet access to function.

There is an installer specified number of seconds between each cloud status poll it is recommended to keep this value set above 30 seconds.

Drivers->Platform->Kasa->Cloud

Since a platform extension does not have a UI, any issues (i.e. invalid token, invalid IP address) will be documented in the error log. If no sub extensions are created an error was encountered.

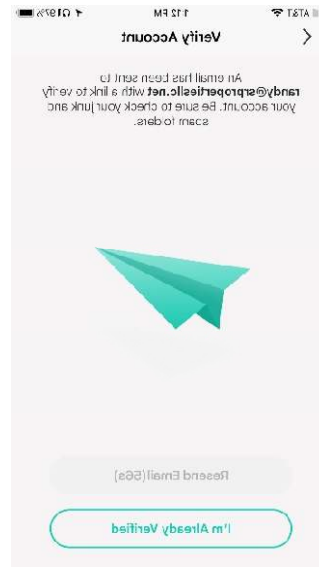
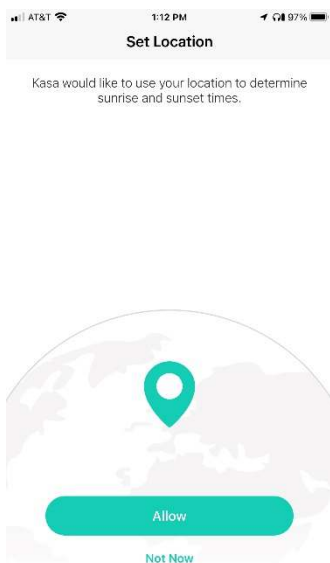
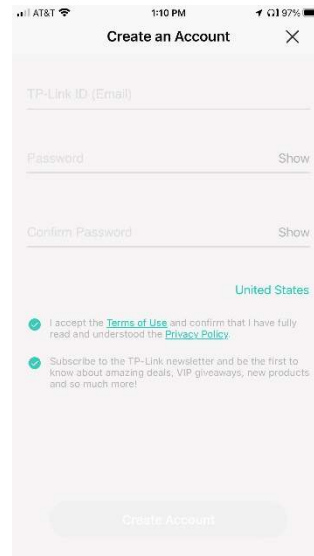
### System Requirements and Dependencies

---

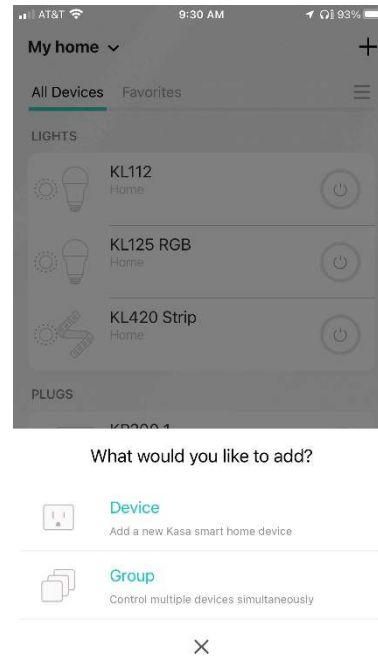
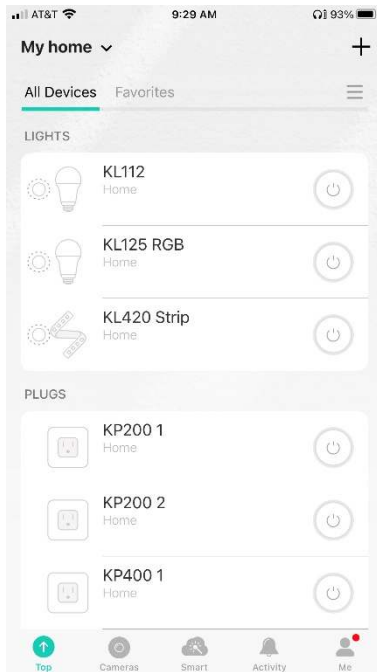
Crestron Home v4.000.0207

# Operation Installation/Upgrade Instructions

Prior to installing the Kasa platform extension, you will need to create a Kasa cloud account and associate the various Kasa devices to the cloud account.



If an account needs to be created, there are a few steps required as shown above.



Follow the above directions to add the various devices. Hitting the “+” sign in the upper right corner starts the process.

## Platform Installer Options

**Obtain License Key**  
 Clicking the link, on the right, takes you to CPLLC.net where license keys can be obtained. A purchased license key is required to be entered i... [CPLLC.net](https://cpllc.net)

**Enter License Key**  
 A purchased license key must be obtained by clicking the above link and entered here. The extension will function 100% without a license key ...

**Username**  
 Username required to log into the Kasa Cloud

**Password**  
 Password required to log into the Kasa Cloud

**Cycle Seconds**  
 Number of seconds between each poll of the Kasa Cloud to make certain Crestron Home is in sync with the cloud. Should some...

**CPLLC License Manager**  
 This extension requires the CPLLC License Manager to also be installed....

**Obtain License Key** – clicking on the “CPLLC.net” link will take you to the website to purchase the necessary license.

**License Key** – this extension requires a paid license key which can be obtained from <https://cpllc.net/?product=bond-bridge-platform>. For testing purposes, this extension will function 100% for 2 hours. Rebooting will reset the two hours.

**Username** – Account username required to login into the Kasa Cloud

**Password** – Account password required to login in to the Kasa Cloud

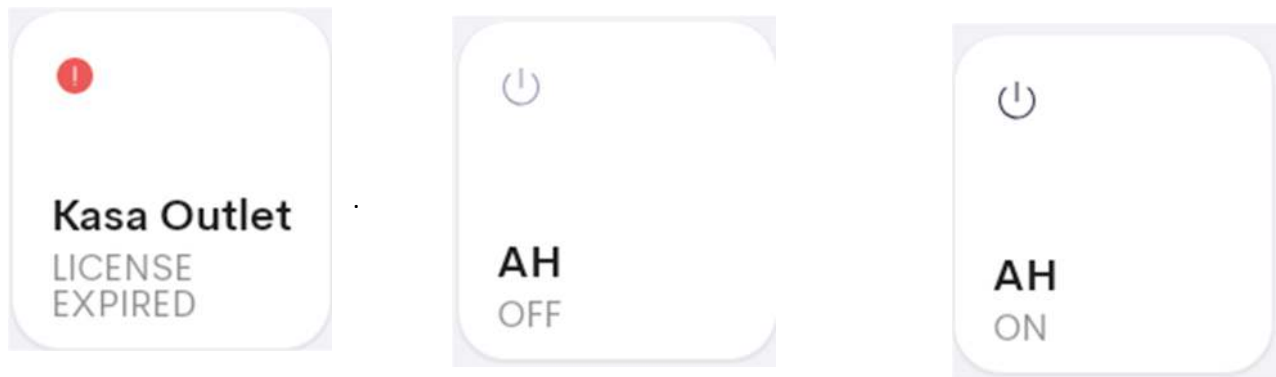
**Polling Seconds** – seconds between each poll

## End-User Experience

---

The Kasa platform consists of both lights and power outlets. This platform implements the new lighting SDK which integrates third party lights into Crestron Home as if they are native. The lights will be managed via the native lights controls.

The outlet extension will have the following user experience.



The above tiles show the switch status if it is on or off and whether the license has expired.

Depending on the outlet device, up to 6 separate outlets can be controlled both globally and individually.

## Limitations/Known Issues

---

- No known limitations or issues

## Supported Features

---

- Not applicable

## Test Environment

---

- CP4-R and MC4-R
- Crestron Home v4.000.0207

## Contact Information

---

- Company: Control Programming LLC
- Author: Randy Johnson
- Email: [randy@CPLLC.net](mailto:randy@CPLLC.net)
- Website: <https://cpllc.net>
- License Key: <https://cpllc.net/product/kasa-cloud-platform/>

## Version History

---

2023-01-20 4.000

- Initial Release

## Licensing and Copyright Information

---

Copyright © 2023 to the present, Control Programming LLC, all rights reserved.