



Control Programming LLC

Release Notes

Platform – Kasa - Platform - Local
version 3.00.001

Extension

This release note is for the CPLLC Kasa Platform Extension. Kasa is a cloud control of various iot devices via their Wi-Fi connections and is described <https://www.kasasmart.com/us>.

Notes and Recommendations

All Kasa devices will need to be acquired and setup using the Kasa mobile app. The extension will obtain a list of devices associated with a given Kasa login.

This extension uses the Kasa cloud protocol and will need internet access to function.

There is an installer specified number of seconds between each cloud status poll it is recommended to keep this value set above 30 seconds.

Drivers->Platform->Kasa->Cloud

Since a platform extension does not have a UI, any issues (i.e. invalid token, invalid IP address) will be documented in the error log. If no sub extensions are created an error was encountered.

System Requirements and Dependencies

Crestron Home v4.000

Operation Installation/Upgrade Instructions

Platform Installer Options

<p>Obtain License Key</p> <p> Clicking the link, on the right, takes you to CPLLC.net where license keys can be obtained. A purchased license key is required to be entered i...</p> <p>CPLLC.net</p>	
<p>Enter License Key</p> <p> A purchased license key must be obtained by clicking the above link and entered here. The extension will function 100% without a license key ...</p> <input type="text"/>	
<p>Max Devices</p> <p> Maximum number of devices looking for. It sometimes takes multiple UDP broadcasts to obtain all of the local devices. If the number...</p> <input type="text" value="12"/>	
<p>Max Attempts</p> <p> Maximum number of devices looking for. It sometimes takes multiple UDP broadcasts to obtain all of the local devices. If the number...</p> <input type="text" value="3"/>	
<p>Seconds to Wait</p> <p> Number of seconds to wait for feedback from the Kasa Device. This must be set to a minimum of 5 seconds.</p> <input type="text" value="5"/>	
<p>Cycle Seconds</p> <p> Number of seconds between each poll of the Kasa to make certain Crestron Home is in sync with the cloud. Should someone decide to ...</p> <input type="text" value="0"/>	
<p>CPLLC License Manager</p> <p> This extension requires the CPLLC License Manager to also be installed...</p>	

Obtain License Key – clicking on the “CPLLC.net” link will take you to the website to purchase the necessary license.

License Key – this extension requires a paid license key which can be obtained from <https://cpllc.net/?product=bond-bridge-platform>. For testing purposes, this extension will function 100% for 2 hours. Rebooting will reset the two hours.

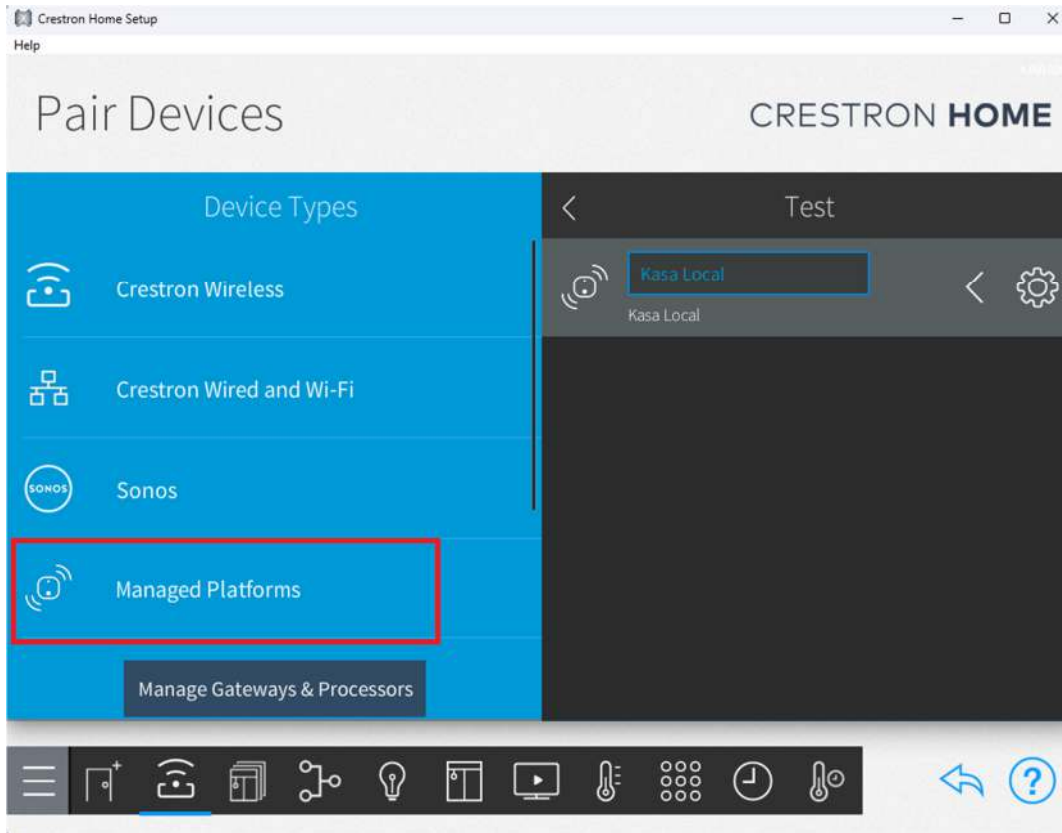
Max Devices – Maximum number of devices expected. Multiple UDP broadcasts might be required to locate all devices. If the number is found no need to continue. Leave set to 0 if unsure.

Max Attempts – number of UDP broadcasts to make.

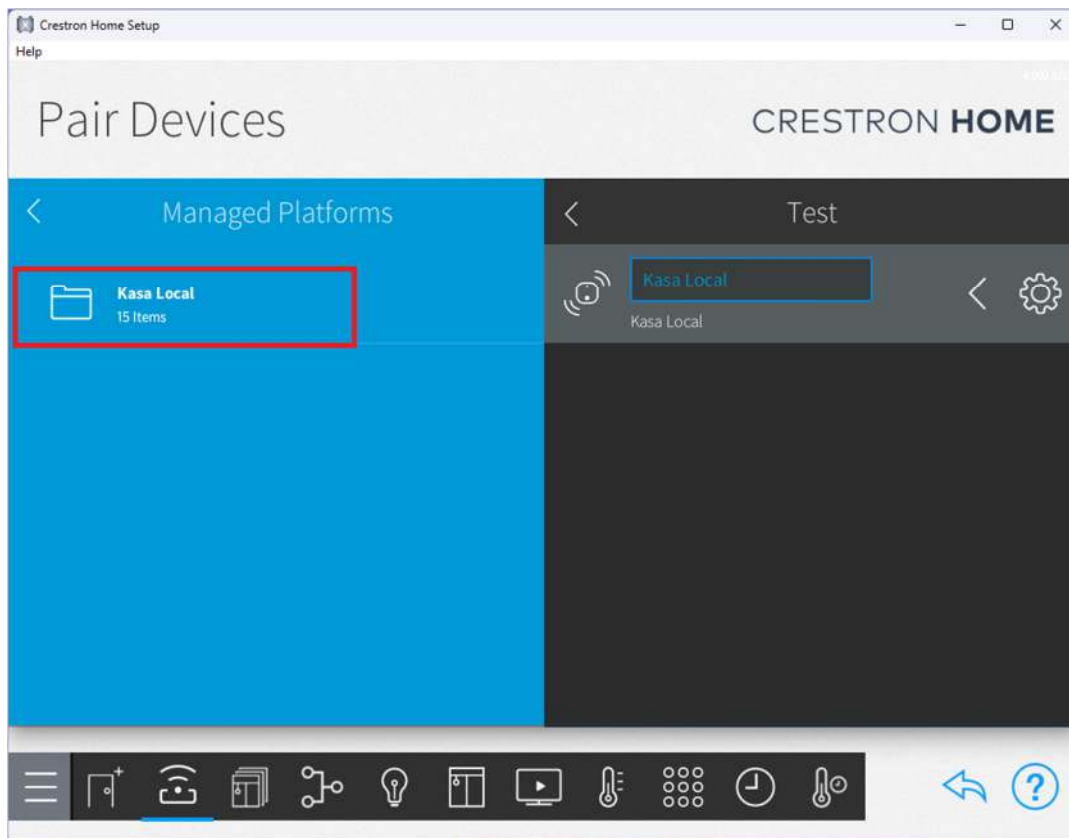
Seconds to Wait – Number of seconds between each UDP broadcast.

Cycle Seconds – number of seconds between each check to keep the devices in sync with CH.

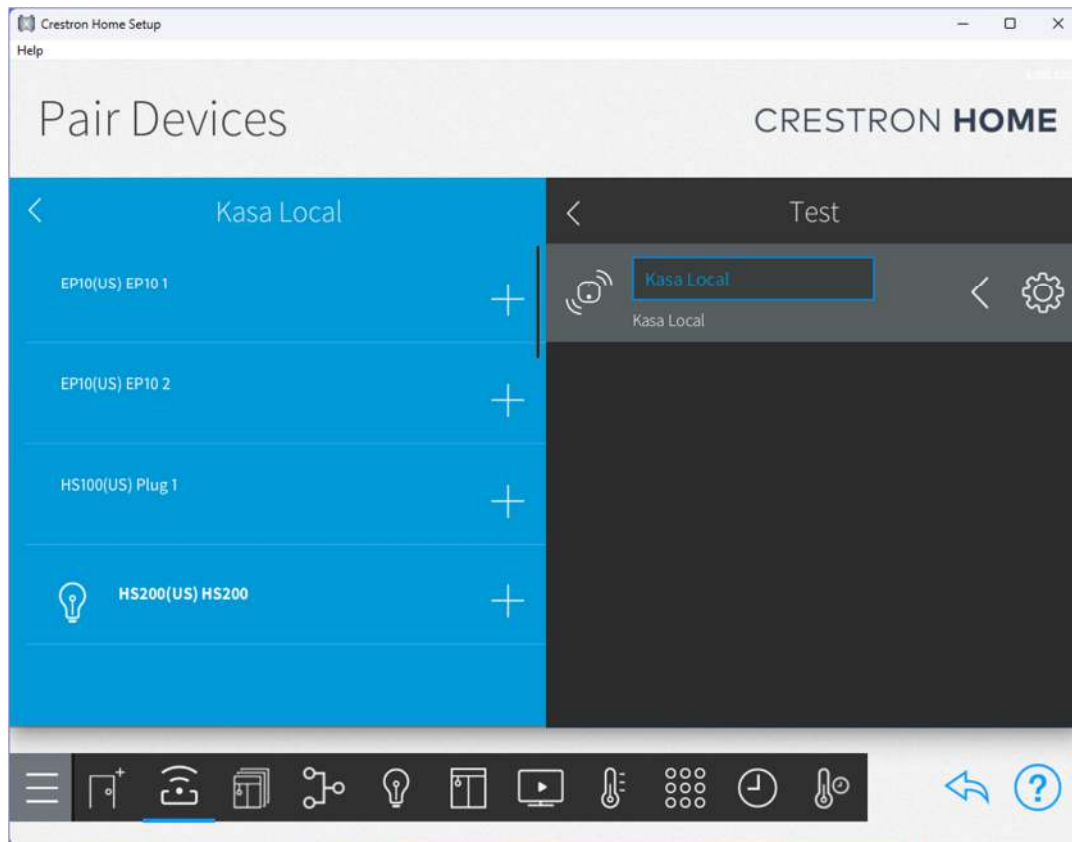
Once the platform extension has been installed, the paired devices can be found by going back to the main menu (see below)



Clicking on the Managed platforms options will bring up a list of platforms as follows:



Clicking on the appropriate folder will then bring up a list of paired devices which can then be added to their corresponding rooms.

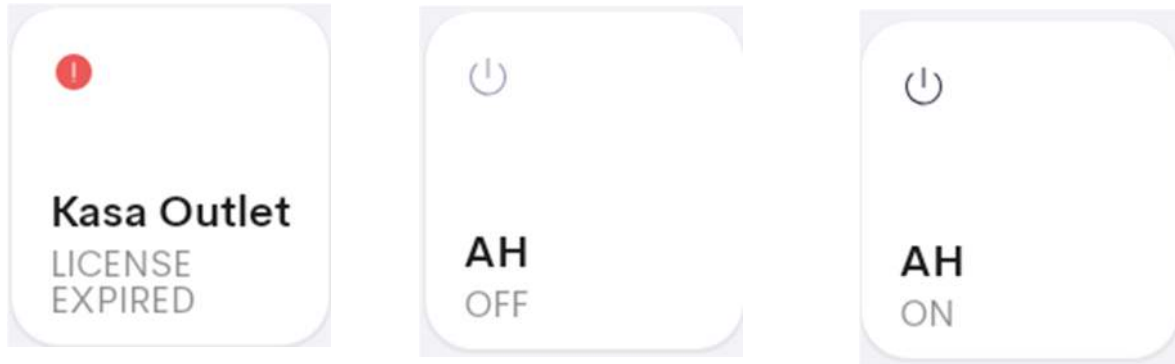


If an account needs to be created, there are a few steps required as shown above.

End-User Experience

The Kasa platform consists of both lights and power outlets. This platform implements the new lighting SDK which integrates third party lights into Crestron Home as if they are native. The lights will be managed via the native lights controls.

The outlet extension will have the following user experience.



The above tiles show the switch status if it is on or off and whether or not the license has expired.

Depending on the outlet device, up to 6 separate outlets can be controlled both globally and individually.

Limitations/Known Issues

- No known limitations or issues

Supported Features

- Not applicable

Test Environment

- CP4-R and MC4-R
- Crestron Home v4.000.0207

Contact Information

- Company: Control Programming LLC
- Author: Randy Johnson
- Email: randy@CPLLC.net
- Website: <https://cpllc.net>
- License Key: <https://cpllc.net/product/kasa-cloud-platform/>

Version History

2023-01-20 3.00.001

- Initial Release

Licensing and Copyright Information

Copyright © 2023 to the present, p Control Programming LLC, all rights reserved.