



Driver – Control Programming LLC Generic AV Display TCP version 1.01.003

Driver

This release note is for the Crestron Home driver Control Programming LLC Generic TCP Display. This driver is designed to establish a generic TCP protocol linkage between a Crestron Home processor and another Crestron processor and be integrated as Display in Crestron Home.. This provides Crestron Home control of legacy equipment.

Notes and Recommendations

Any notes or recommendations to be made.

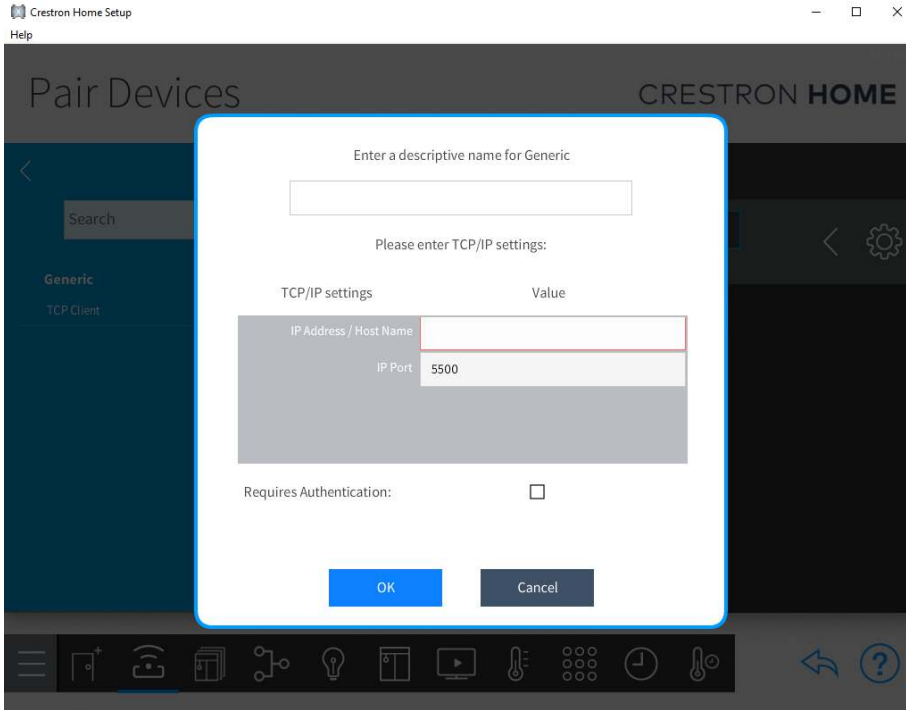
System Requirements and Dependencies

Provide any minimum versions of applications required to run your driver.

- I.E. Crestron Home v3.002

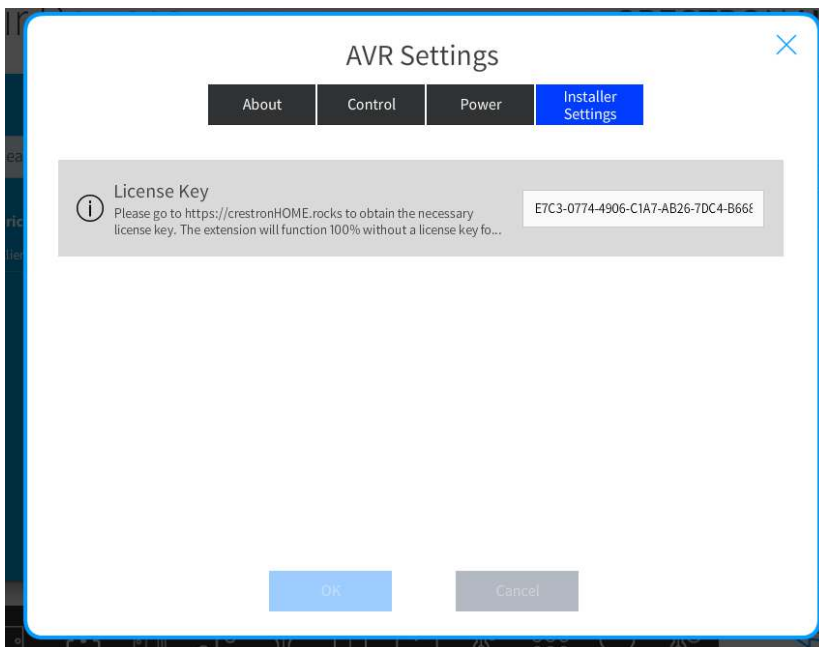
Installation/Upgrade Instructions

Installation and dealer-facing configuration instructions.



IP Address/Host Name – IP address if device to send the control strings to

Port – Port number device is listening on



License Key – this extension requires a paid license key which can be obtained from <https://cpllc.net/?product=generic-tcp-display>. For testing purposes, this extension will function 100% for 2 hours. Rebooting will reset the two hours.

End-User Experience

This is a driver and as such there is no end user experience.

Limitations/Known Issues

No known limitations. This driver is designed to provide Crestron HOME control of legacy Crestron products such as the Procise and/or the AMS-AIP.

Supported Features

This list comes from the driver JSON file in human readable form.

- Discrete Power On/Off
- Discrete Mute On/Off
- Volume Raise/Lower
- Inputs 1-8

It does not expect any feedback from the receiving device.

Test Environment

List the environments where this driver has been tested and any control system firmware versions used.

- I.E. Crestron Home v3.001.1234

Supported Models

Generic driver

Contact Information

- Company: Control Programming LLC
- Author: Randy Johnson
- Email: randy@CP LLC.net
- Website: <https://CP LLC.net>
- License: <https://cp llc.net/?product=generic-tcp-display>

Version History

2021-03-27 1.01.001.0001

- Update license to support site licenses

2021-03-23 1.0.0.3

- Initial release

Licensing and Copyright Information

Certain Crestron products contain open-source software. For specific information, please visit www.crestron.com/opensource